

Developed By:



Marketed By:



EduMeta



Proposal Document

Transind Solution

www.transind.co.in

2/1 Radhapark, Netaji Sarak, Behala, Kolkata – 700 041

Contact Us : 9674009925 / 9674009926; email : sales@transind.co.in

Index

1. Project Overview
 - a. Hardware System/Setup
 - b. Software System
 - c. Web Portal
 - d. Library Management
 - e. Payment Gateway
 - f. Support System
2. Project Timeline
3. Fees Structure and Payment Terms
4. EULA
5. Service Agreement
6. General Terms

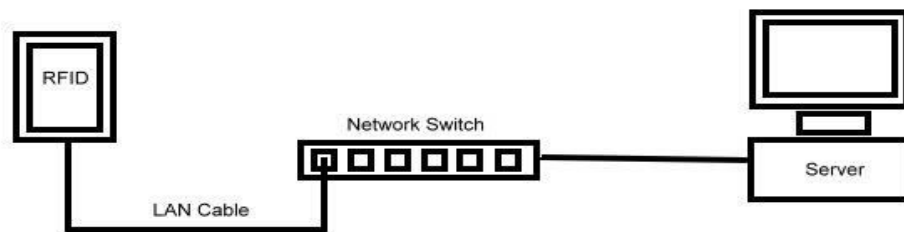
(1.a).Hardware System/Setup

We are providing 3 types of Devices

1. Wall mount RFID Device



Schematic Diagram



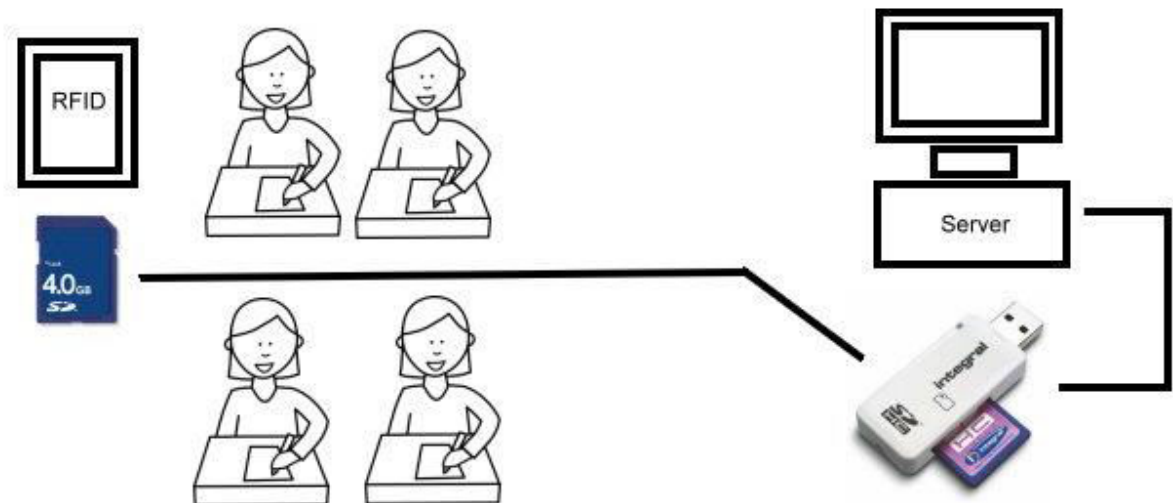
Brief Description:

This device is a wall mounted device. In front of every classroom this device will be installed. This device will be attached to a server via LAN. When a student places his or her card near the RFID device his attendance information will be saved into the server.

2. Handheld RFID Device



Schematic Diagram



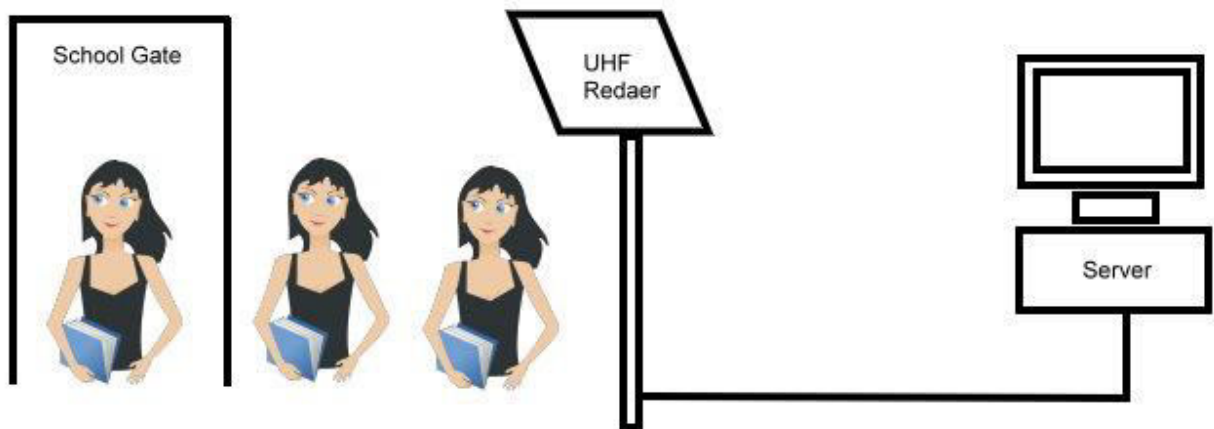
Brief Description :

This is a wireless, hand held, battery operated RFID device. In a classroom each student will pass this to another, while doing this he or she will place his card over this device, the moment they do it, his or her attendance information will be saved in a SD card which is inbuilt into the device. Data entry operator subsequently collects the information from this SD card and store it into the server.

3. RFID Mass Reader UHF Antenna



Schematic Diagram

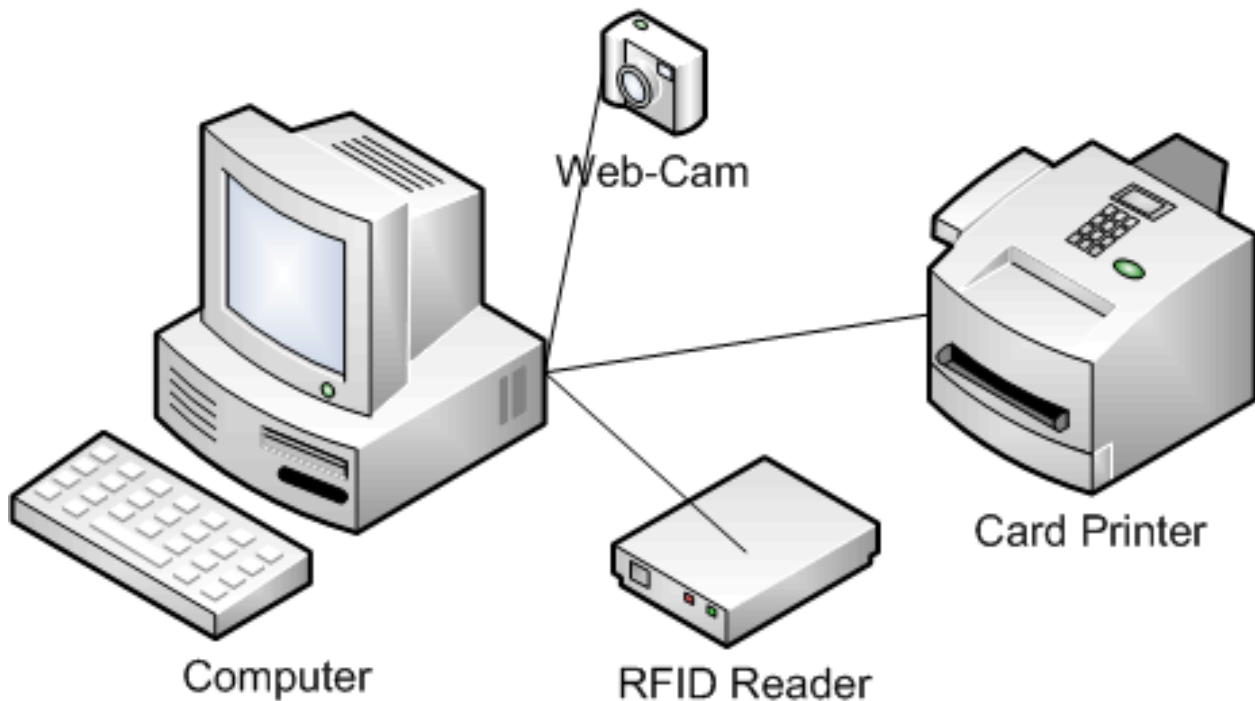


Brief Description

This is an ultra high frequency Reader (UHF reader) , It can read a tag from 3 to 5 meter distance. This device is installed In front of the main gate of the school. Whenever a student comes near the main gate, this device automatically reads the tag and sends the information to the server

Patron Card Process System

Patron Card Process System



Components:

- Card Printer (Double Side printing)
- Digital Webcam & Tripod
- Mid Range RFID Reader/Writer
- Capture, Edit & Printing Software
- Price not include PC , Monitor and TAGS

KEY BENEFITS:

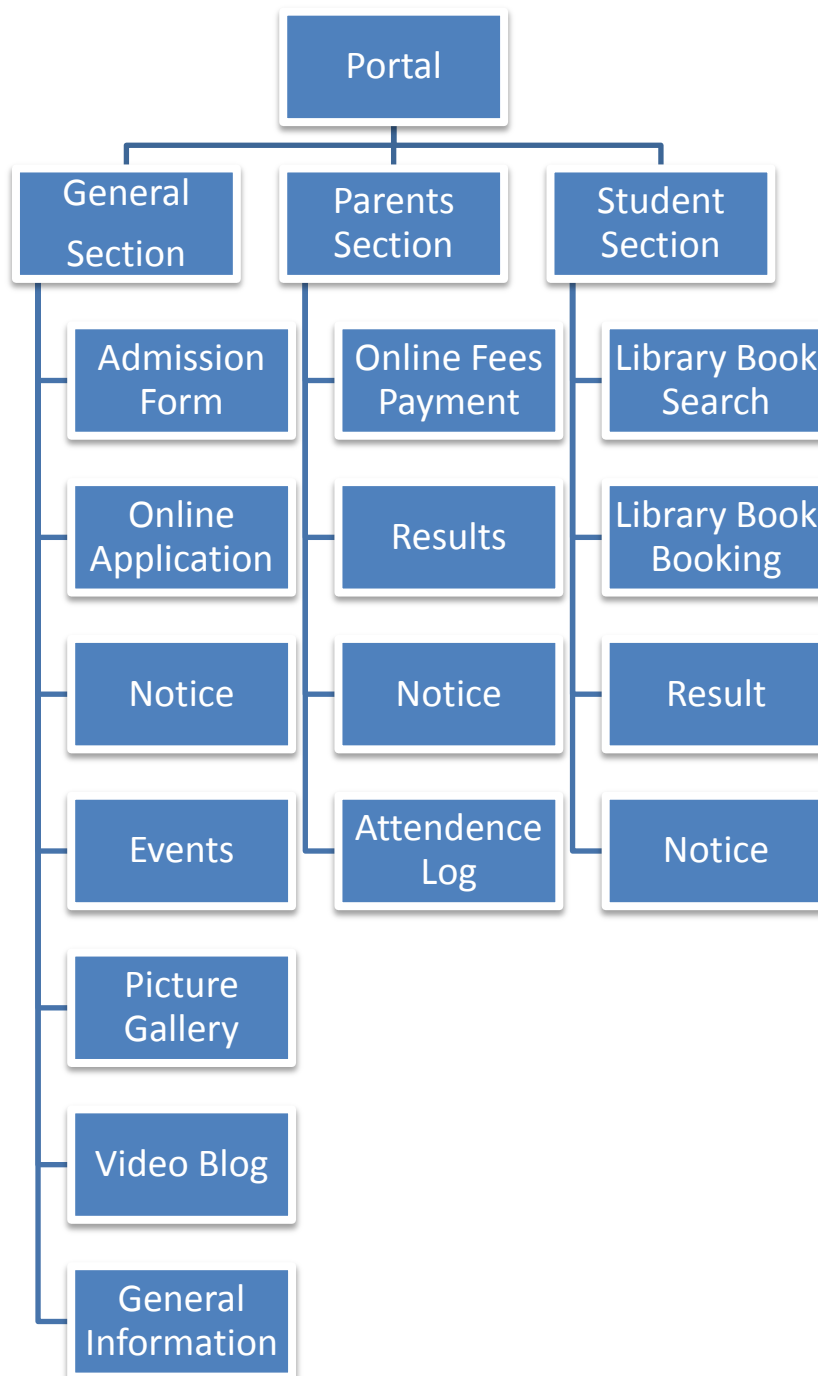
- Single Side Card Printing will set Operator print patron card without changing side of card.
- It is best way to serve patron.
- Connect to Integrated Library System Directly (this option depend on ILS/LMS system)

(1.b). Software System

- Student Management System
- Attendance
- Timetable
- Admission System
- Fees Collection
- Examination Management
- Result Publishing
- Hostel Management
- School Bus Management
- Staff Management
- Staff Payroll
- Finance

For More Details Please See **Annexure 1**

(1.c). Web Portal



(1.d).Library Management System



RFID based Library Management System

Book Tagging

Check IN/Out Service

Book Drop

Inventory

Information Kiosk

Online Book Search and Booking

RFID Transponder:

An RFID tag is the most important link in any RFID system. It has the ability to store information relating to the specific item to which they are attached, rewrite again without any requirement for contact or line of sight. Data within a tag may provide identification for an item, proof of ownership, original storage location, loan status and history. RFID Tag consists of an integrated circuit and an antenna combined to form a transponder. RFID tags collect the energy to operate from a Radio Frequency (RF) field emitted by a reader device; therefore they do not need a battery. When energized by a radio signal from a fixed position reader or handheld scanner, the tag returns the stored information in order that the item to which it is attached can be easily located. The chip also has a "multi-read" function, which means that several tags can be read at once.

RFID tags have been specifically designed to be affixed into library media, including books, CDs, DVDs and tapes.



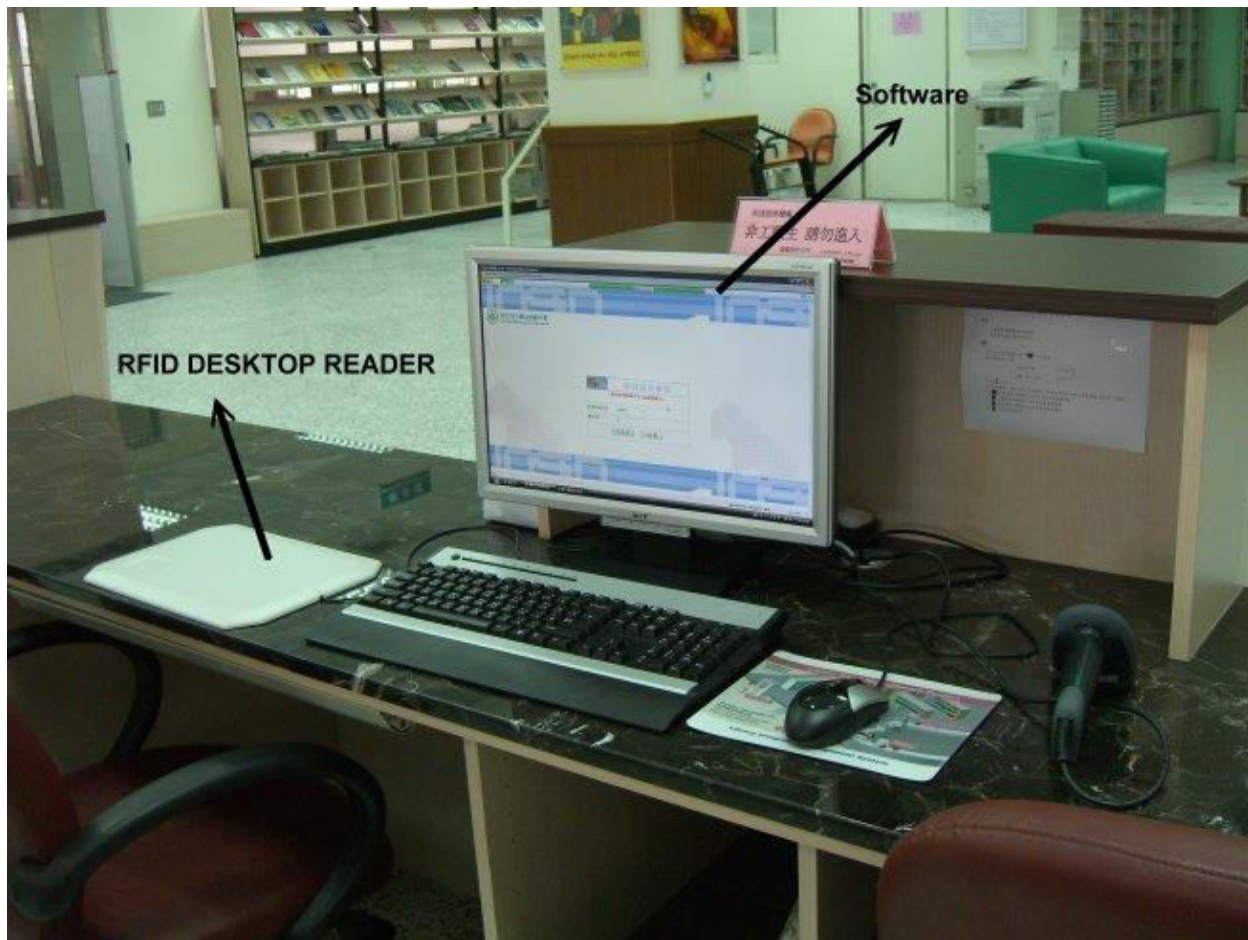
- **Book Tagging**
- **Check IN/Out Service (Counter Station)**

Counter Station is a staff assisted station on services such as loan, return, tagging, sorting and etc. It is loaded with arming/disarming module, tagging module and sorting module.

Together with circulation module from Library Management System Software, this station is used for the following services:

- Editing and updating of patron's record
- Add and deleting of patron's record
- Generate loan history for a particular patrons

- Managing of fines incurred by the patron
- Arm/Disarm of EAS bit inside the library material
- Program of new library material
- Sort item in accordance to their branch and category number
- The features of this station depend on the module loaded by the Library Management Software.



- **Book Drop**

The Book Drops can be located anywhere, within or outside the library. Possible remote locations outside the library include MRT/train stations, shopping centers, schools, etc.

Developed by: Leon Hightech
Authorized SME Partner: **Transind Solution**

This offers unprecedented flexibility and convenience of returning library items at anytime of the day, even when the library is closed.

Patron inserts the library item into the slot. The reader captures the electronic signature and sends to backend system for loan cancellation. Patron is acknowledged by beeping sound and flashlight. Patron's record is updated immediately. This is possible due to the seamless link between Library RFID Management System and the host computer system. As such, users who have reached their loan quota can start borrowing items once they have returned them through the Book Drop.

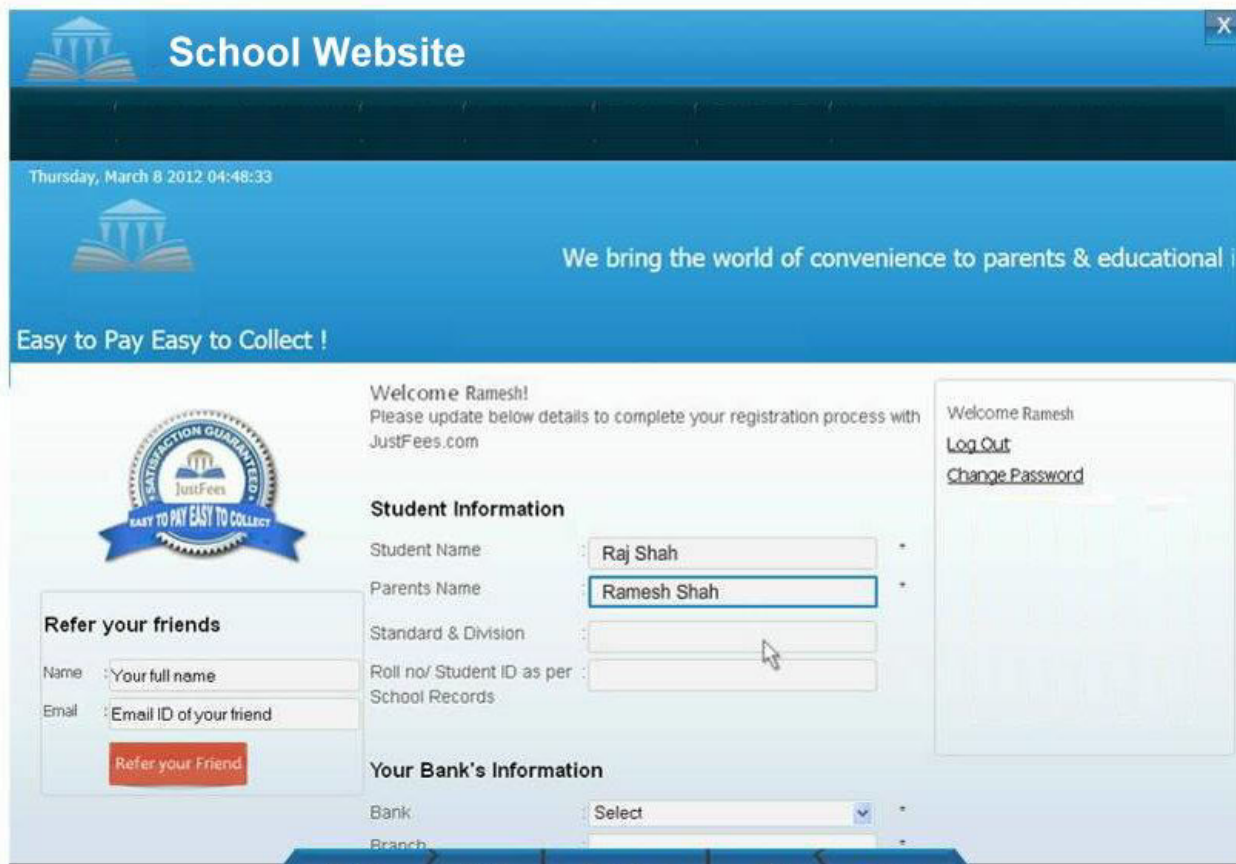


- **Inventory**
- **Information Kiosk**
- **Online book Search and Booking**

A student can avail all the information's about the available books online , using this facility he can also book different books online as well.

(1.e).Payment Gateway

You can use your online payment gateway for various purposes like F0ees Collection, Donation, Fine collection etc.

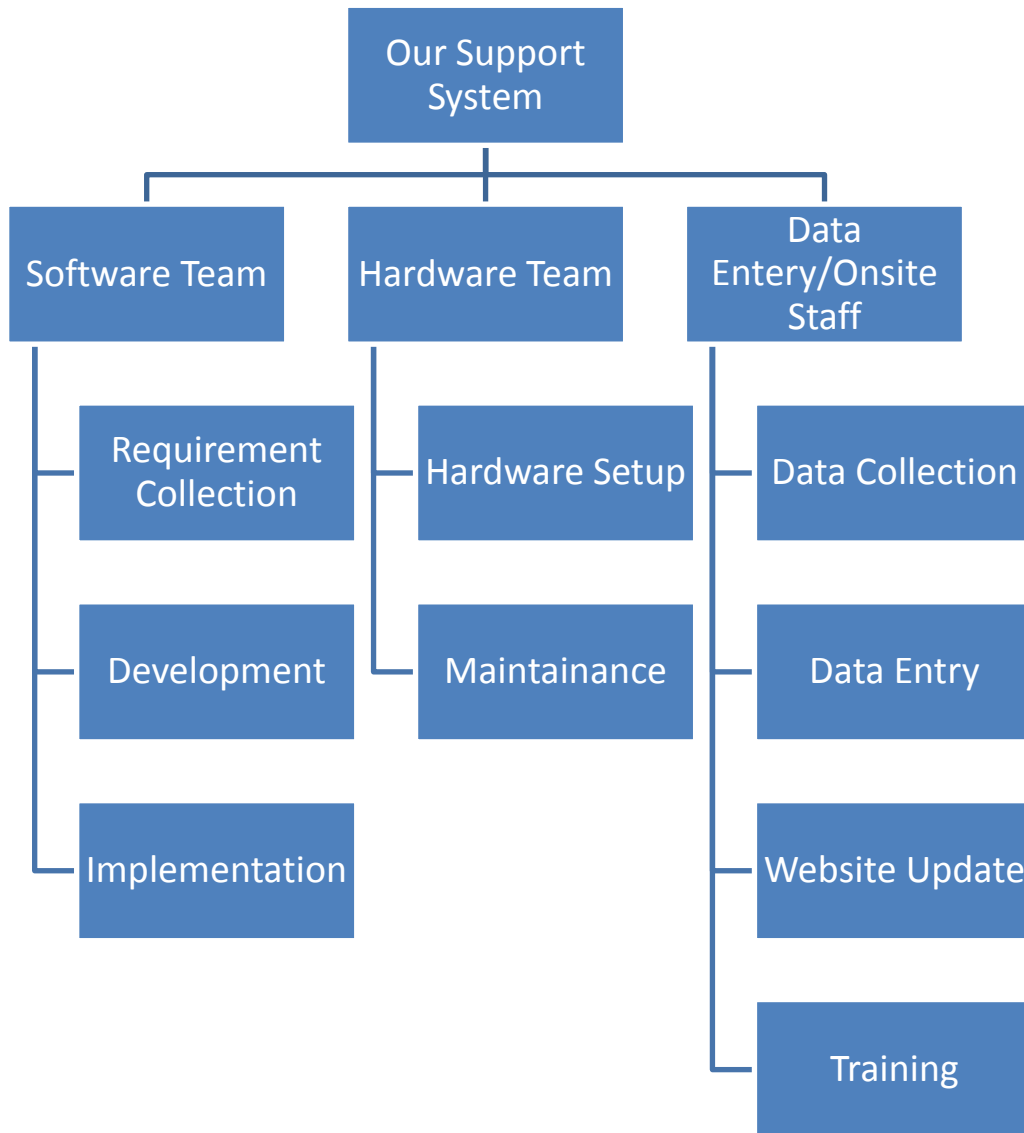


The screenshot shows a web browser window titled "School Website". The page header includes a logo of a school building and the text "School Website". Below the header, the date and time "Thursday, March 8 2012 04:48:33" are displayed. A blue banner contains the text "We bring the world of convenience to parents & educational" and "Easy to Pay Easy to Collect!".

The main content area is divided into several sections:

- Welcome Ramesh!**: A message asking the user to update details to complete registration with JustFees.com.
- Student Information**: A form with the following fields:
 - Student Name:
 - Parents Name:
 - Standard & Division:
 - Roll no/ Student ID as per School Records:
- Your Bank's Information**: A form with the following fields:
 - Bank:
 - Branch:
- Refer your friends**: A section with fields for "Name" (Your full name) and "Email" (Email ID of your friend), and a red "Refer your Friend" button.
- Navigation**: A sidebar on the right with links for "Welcome Ramesh", "Log Out", and "Change Password".

Support System



EDUMETA 3.0

A software which is specially made for education management system with multipurpose utilities. It is a one stop solution for all the day to day activities related to Education Institutes. It's also beneficial for students, teachers and guardians they all can avail these facilities through this web portal.

Benefits of School:

Leon Hightech will provide server , data centre, switch, database maintenance and the RFID device, Free Web Portal, School management software, Library management system, Data entry operator, Ownership of all device after completion of agreement, Full software support within contract period.

Benefits of Students:

Online notice, grade card, routine, examination schedule. notes, class details, demo question paper. Online library book search.

Benefits of Parents:

Online notice, grade card, routine, examination schedule, notes, Online fees payment, guardians meeting & meeting minutes. Student attendance sms alert & pickup van position alert.

Project Timeline/Phase

- a. Phase-1 (**1 Month**)
 - i. Requirement Analysis / feasibility Analysis
 - ii. Hardware Prototype Testing and Installation
- b. Phase-2 (**2 Months**)
 - i. School Management System Installation
 - ii. Portal Development and Installation
- c. Phase-3 (**2 Month**)
 - i. Library Management System Installation
- d. Phase-4 (**15 Days**)
 - i. Payment Gateway Installation
- e. Support

Fees structure and Payment Terms

- 1. Payment : Rs. 1600/- per student per year / Rs. 400 quarterly per student (all taxes inclusive)**
- 2. Minimum contract period will be three years.**
- 3. Quarterly Payments in Advance.**

General Terms

- 1) Minimum contract period will be three years.
- 2) Leon Hightech shall bear all the expenses for the appointed persons * who will act mainly as data entry operators and they will also look after the device maintenance part.
- 3) Institute will provide the workplace and computer for the appointed person , Institute shall also provide all required computers , school will also bear internet cost required to run the entire process.
- 4) Institute will provide electrical source (e.g. plug point) and also bear the expenditure for electric consumption for this RFID process.
- 5) Leon Hightech shall replace faulty device during contract period , but if the device is found physically damaged, institute authority will bear that expense.
- 6) Leon Hightech will provide server , data centre, switch, database maintenance and the RFID device. Institute / Organization will provide RFID tag, RFID sticker , RFID card and also the printing cost over RFID card.
- 7) Payment : Rs. 1600/- per student per year / Rs. 400 quarterly per student (all taxes inclusive), Institute will collect the amount from all the students and pay the entire amount on a fixed date.
- 8) Ownership of all the devices will be under Leon Hightech exclusively inside contract period, if institute continue the contract 7 years and once the period is over, the institute will be the owner of these devices.
- 9) Entire software project will be implemented in four phases.
- 10) Copyright and intellectual right of the software will remain solely under Leon Hightech, Institute will be the licensed holder of the software.
- 11) Software will be developed as per the requirement of the institute, once the software is ready according to the need, Leon Hightech's responsibility regarding developing the software is over, However, If further change is required, institute will issue a written notice for that, Leon Hightech will take necessary steps accordingly, these changes will be made absolutely free of cost.
- 12) All required stationary's like printer cartridge and other's will be provided by the institute.

* above 1000 student fulltime employee and below 1000 student part time employee as per student strength.

Eula(End User License Agreement)

END-USER LICENSE AGREEMENT FOR **EDUMETA 3.0** IMPORTANT PLEASE READ THE TERMS AND CONDITIONS OF THIS LICENSE AGREEMENT CAREFULLY BEFORE CONTINUING WITH THIS PROGRAM
INSTALL: **LEON HIGHTECH** End-User License Agreement ("EULA") is a legal agreement between you (either an individual or a single entity) and LEON HIGHTECH for the **LEON HIGHTECH** EDUMETA 3.0 (s) identified above which may include associated software components, media, printed materials, and "online" or electronic documentation ("EDUMETA 3.0"). By installing, copying, or otherwise using the EDUMETA 3.0, you agree to be bound by the terms of this EULA. This license agreement represents the entire agreement concerning the program between you and **LEON HIGHTECH**, (referred to as "licenser"), and it supersedes any prior proposal, representation, or understanding between the parties. If you do not agree to the terms of this EULA, do not install or use the EDUMETA 3.0.

The EDUMETA 3.0 is protected by copyright laws and international copyright treaties, as well as other intellectual property laws and treaties. The EDUMETA 3.0 is licensed, not sold.

1. GRANT OF LICENSE.

The EDUMETA 3.0 is licensed as follows :

(a) Installation and Use.

LEON HIGHTECH grants you the right to install and use copies of the EDUMETA 3.0 on your computer running a validly licensed copy of the operating system for which the EDUMETA 3.0 was designed [e.g., Windows 95, Windows NT, Windows 98, Windows 2000, Windows 2003, Windows XP, Windows ME, Windows Vista, Windows7, Windows8].

(b) Backup Copies.

You may also make copies of the EDUMETA 3.0 as may be necessary for backup and archival purposes.

2. DESCRIPTION OF OTHER RIGHTS AND LIMITATIONS.

(a) Maintenance of Copyright Notices.

You must not remove or alter any copyright notices on any and all copies of the EDUMETA 3.0.

(b) Distribution.

You may not distribute registered copies of the EDUMETA 3.0 to third parties. Evaluation versions available for download from LEON HIGHTECH's websites may be freely distributed.

(c) Prohibition on Reverse Engineering, Decompilation, and Disassembly.

You may not reverse engineer, decompile, or disassemble the EDUMETA 3.0, except and only to the extent that such activity is expressly permitted by applicable law notwithstanding this limitation.

(d) Rental.

You may not rent, lease, or lend the EDUMETA 3.0.

(e) Support Services.

LEON HIGHTECH may provide you with support services related to the EDUMETA 3.0 ("Support Services"). Any supplemental software code provided to you as part of the Support Services shall be considered part of the EDUMETA 3.0 and subject to the terms and conditions of this EULA.

(f) Compliance with Applicable Laws.

You must comply with all applicable laws regarding use of the EDUMETA 3.0.

3. TERMINATION

Without prejudice to any other rights, LEON HIGHTECH may terminate this EULA if you fail to comply with the terms and conditions of this EULA. In such event, you must destroy all copies of the EDUMETA 3.0 in your possession.

4. COPYRIGHT

All title, including but not limited to copyrights, in and to the EDUMETA 3.0 and any copies thereof are owned by LEON HIGHTECH or its suppliers. All title and intellectual property rights in and to the content which may be accessed through use of the EDUMETA 3.0 is the property of the respective content owner and may be protected by applicable copyright or other intellectual property laws and treaties. This EULA grants you no rights to use such content. All rights not expressly granted are reserved by LEON HIGHTECH.

5. NO WARRANTIES

LEON HIGHTECH expressly disclaims any warranty for the EDUMETA 3.0. The EDUMETA 3.0 is provided 'As Is' without any express or implied warranty of any kind, including but not limited to any warranties of merchantability, no infringement, or fitness of a particular purpose. LEON HIGHTECH does not warrant or assume responsibility for the accuracy or completeness of any information, text, graphics, links or other items contained within the EDUMETA 3.0. LEON HIGHTECH makes no warranties respecting any harm that may be caused by the transmission of a computer virus, worm, time bomb, logic bomb, or other such computer program. LEON HIGHTECH further expressly disclaims any warranty or representation to Authorized Users or to any third party.

6. LIMITATION OF LIABILITY:

In no event shall LEON HIGHTECH be liable for any damages (including, without limitation, lost profits, business interruption, or lost information) rising out of 'Authorized Users' use of or inability to use the EDUMETA 3.0, even if LEON HIGHTECH has been advised of the possibility of such damages. In no event will LEON HIGHTECH be liable for loss of data or for indirect, special, incidental, consequential (including lost profit), or other damages based in contract, tort or otherwise. LEON HIGHTECH shall have no liability with respect to the content of the EDUMETA 3.0 or any part thereof, including but not limited to errors or omissions contained therein, libel, infringements of rights of publicity, privacy, trademark rights, business interruption, personal injury, loss of privacy, moral rights or the disclosure of confidential information.

-- END --